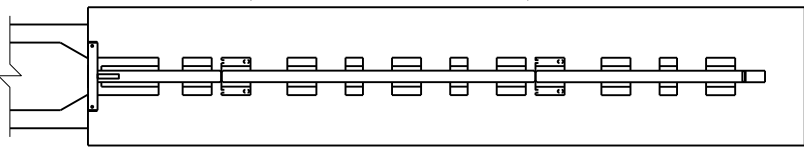


Additional Concrete Pad Construction may be Required Per Manufacturer Specifications



~ SECTION A-A ~
Reinforcement Per Manufacturer Specifications

~ CONCRETE PAD SECTION ~
(Per Manufacturer Specifications)
Refer to Notes ⑤

~ NOTES ~

- ① NOSE ASSEMBLY (OBJECT MARKER TYPE 1 AS REQUIRED)
- ② BACKUP
- ③ 6" CONCRETE PAD PER MANUFACTURER SPECIFICATIONS.
4. CRASH CUSHION TYPE VI , CLASS A , B , C
 - A CLASS B OR C, AS REQUIRED
 - B EITHER TEST LEVEL 2 (TL2) OR TEST LEVEL 3 (TL3),AS REQUIRED.
 - C SEE "CONNECTION DETAILS OF CRASH CUSHION TYPE VI TO DOUBLE FACE GUARDRAIL".
- ⑤ THE CONCRETE PAD, PAD EXCAVATION AND STEEL REINFORCEMENT, INSTALLED IN PLACE SHALL BE INCLUDED IN THE UNIT PRICE BID FOR CRASH CUSHION TYPE VI. DIMENSION AND REINFORCEMENT SPECIFICATIONS FOR CONCRETE PADS ARE TO BE PROVIDED BY THE MANUFACTURER. THE PAD WILL NOT BE REQUIRED WHEN THE UNIT IS CONSTRUCTED ON RIGID PAVEMENT.
6. CRASH CUSHION TYPE VI MAY BE USED AT THE END OF: CONCRETE MEDIAN BARRIER, BRIDGE PIERS AND STEEL "W" BEAM GUARDRAIL (DOUBLE FACE).
7. WHEN CRASH CUSHION TYPE VI CONNECTS TO: CONCRETE MEDIAN BARRIER OR BRIDGE PIER THE CONTRACT UNIT PRICE SHALL INCLUDE: CRASH CUSHION TYPE VI, ALL HARDWARE, ADDITIONAL RAIL ELEMENTS, POST, CONCRETE PAD AND ALL OTHER INCIDENTALS NECESSARY TO COMPLETE THE INSTALLATION.
8. THIS DRAWING DEPICTS A CONNECTION OF CRASH CUSHION TYPE VI TO CONCRETE MEDIAN BARRIER END. FOR THIS APPLICATION SEE CURRENT STD. DWG. RBE-065 " CONCRETE MEDIAN BARRIER END ".
9. WHEN CRASH CUSHION TYPE VI CONNECTS TO DOUBLE FACE GUARDRAIL SEE CURRENT SEPIA 018 "CONNECTION DETAILS OF CRASH CUSHION TYPE VI TO DOUBLE FACE GUARDRAIL".
- ⑩ CRASH CUSHIONS ARE TO BE INSTALLED PER MANUFACTURER SPECIFICATIONS, INCLUDING THE CONCRETE PAD. THE MANUFACTURER SHALL FURNISH TWO (2) SETS OF SHOP PLANS TO THE CONTRACTOR WITH EACH INSTALLATION.
11. THE CRASH CUSHION TYPE VI MAY ALSO BE UTILIZED FOR TEMPORARY USE AND CONSTRUCTION ZONES (CLASS BT).
12. A CRASH CUSHION TYPE VI CLASS B IS TO BE USED IN AREAS WHERE CRASH HISTORY IS NOT KNOWN TO BE SEVERE.
13. A CRASH CUSHION TYPE VI CLASS C IS CONSIDERED A SEVERE USE CRASH CUSHION.

ADDITIONAL BID ITEMS AND UNIT TO BID
OBJECT MARKER TYPE 1 (AS REQUIRED) EACH

CLASS	SPEED (MPH)	ATTENUATOR			SUGGESTED ADT* RANGE (P.C.P.L.) **
		MODEL	PRODUCT NAME	LENGTH	
B	45 & LESS	TL2	UNIVERSAL TAU-M	14'-2"	UP TO 12,000
			3-BAY QUADGUARD M10	12'-0"	
	OVER 45	TL3	UNIVERSAL TAU-M	22'-9"	
			5-BAY QUADGUARD M10	18'-0"	
C	OVER 45	TL3	SCI100GM	23'-0"	8,000 AND OVER
			QUADGUARD ELITE M10	26'-7"	

W= 2'-0" (INSIDE BAY WIDTH)

* AVERAGE DAILY TRAFFIC
** PASSENGER CARS PER LANE

USE WITH CUR. STD. DWG.
RBE-065 RBC-110

KENTUCKY
DEPARTMENT OF HIGHWAYS

CRASH CUSHION
TYPE VI A B C
(ONE & TWO DIRECTION)

STANDARD DRAWING NO. RBE-060-15

SUBMITTED [Signature] DATE 02-26-20

APPROVED [Signature] ENGINEER DATE 02-26-20